



1st Annual UF Brain Injury Research Symposium

Concurrent with

4th Annual BIF Education Conference

Supporting and Empowering Florida's Brain Injury Action Plan



Earn up to 12 CME/CE/CEUs
Thursday May 14th & Friday May 15th, 2026
University of Florida Research & Academic Center
at Lake Nona, 6550 Sanger Road, Orlando, FL 32827

Register here:
[**BIF Conference Registration**](#)

CONFERENCE REGISTRATION BROCHURE

CONFERENCE HIGHLIGHTS

Thursday May 14th & Friday May 15th 2026

University of Florida Research & Academic Center at Lake Nona

Brain Injury Florida (BIF) is an advocacy/service non-profit organization operating statewide in Florida that represents and serves the over 4.9 million Floridians living with Brain Injury from all causes – traumatic and non-traumatic. **BIF** is a chartered state affiliate of the **Brain Injury Association of America (BIAA)**.

The **Florida Brain Injury Research Symposium** is the inaugural statewide research-focused meeting hosted by the **University of Florida Brain Injury, Rehabilitation, and Neuroresilience (BRAIN) Center**. The symposium is designed to bring together researchers, clinicians, rehabilitation specialists, emergency and trauma providers, trainees, and community partners from across Florida and beyond to share advances in brain injury science, clinical care, and systems of recovery.

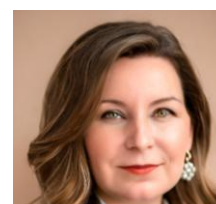
Please plan to join us for **BIF's 4th Annual Brain Injury Education Conference** – being held in conjunction with the **University of Florida's Brain Injury Research Symposium!** Presentations were sought that will empower the new Florida Brain Injury Action Plan. All are welcome, including people with brain injury, family members, support groups, brain injury professionals, researchers, advocates, state agency staff, and legislators.

FEATURING:



Rebecca Montalvo-Campbell, PhD

Assistant Professor
University of South Florida



Rita Lenhardt, DHSc, CCC-SLP, CBIS-AP

Assistant Professor, Gannon University

Arielle Resnick, PT, DPT, NCS

Director of Neurologic Physical Therapy Residency
Kessler Institute for Rehabilitation



Carrie Rayburn, CTRS, CBIS

Recreational Therapist
HCA Florida West Rehabilitation



Jolie Haun, PhD, EDS, LMT

Affiliate Assistant Professor
University of South Florida



BRAIN INJURY FLORIDA

Support • Prevention • Education • Advocacy

11:00 AM REGISTRATION & EXHIBITS

Arrive early and check out Exhibitors from around the state of Florida, providing brain injury rehabilitation and related services.

11:45 AM WELCOME by Denny Armington, MHA, Founding Board President, *Brain Injury Florida*

12:00 PM OPENING KEYNOTE

Invited Speaker: Arielle Resnick, PT, DPT, NCS

Director of Neurologic Physical Therapy Residency, Kessler Institute for Rehabilitation

The Plastic Brain: Reimagining TBI Recovery Through Interdisciplinary Innovation

Traumatic Brain Injury challenges clinicians to rethink traditional rehabilitation approaches. This session explores how principles of neuroplasticity and motor learning can be leveraged through interdisciplinary collaboration and innovative technology. Physical, Occupational, and Speech-Language therapists will examine evidence-based tools such as robotics, virtual reality, biofeedback, and augmentative and alternative communication to promote recovery across motor and cognitive domains. Case examples will illustrate how technology-enhanced, team-based interventions drive meaningful functional change and optimize outcomes. Participants will leave with practical strategies to integrate neuroplasticity-driven innovation into everyday clinical practice.

1:00 – 1:15PM - Message from Premier Exhibitors

1:15 – 1:30 PM - Break to Visit with the Exhibitors, Move to Next Session

1:30 PM Concurrent Workshop 1 – Nathan Flores, PhD, MAT

Understanding and Treating Grief and Sleep Disturbances Post Acquired Brain Injury

Grief and sleep disturbances are often overlooked yet profoundly interrelated challenges following acquired brain injury (ABI). This presentation explores how neurological, psychological, and existential factors converge to disrupt restorative sleep and complicate the grieving process for individuals adjusting to cognitive, emotion, and identity changes post-injury. Drawing on current research and clinical insights, the talk examines the bidirectional relationship between disrupted sleep and unresolved grief, highlighting how these experiences impact recovery, adjustment, and quality of life. Attendees will gain a deeper understanding of the complex interplay between brain injury, loss and sleep, fostering greater empathy and informed clinical awareness.

Concurrent Workshop 2 – Candace Gantt, Founder, Mind Your Brain Foundation

Drew Nagele, PsyD, ABPP, CBIST-AP, FACRM

Communicate with Confidence: Public Speaking and Advocacy after a Brain Injury

Using Toastmasters International guidelines, Candace will empower brain injury survivors to speak clearly and persuasively in any setting. This workshop provides three practical communication tools for preparation. You'll learn to confidently discuss medical needs with providers and be a champion for the brain injury community with legislators. Develop your voice, share your story, and become a powerful advocate.

CONFERENCE SCHEDULE

2:30 PM – 3:00 PM Beverage and Snack Break

Visit with the Exhibitors, Move to Next Session

3:00 PM Concurrent Workshop 3 – Lauren Bilski, PT, DPT, & Briana Elson MS, OTR/L, BCPR, CBIS

Sensory Synergy: Interdisciplinary Approaches to Visual and Vestibular Rehab

This presentation explores best practices in vision and vestibular rehabilitation for adults with neurological impairment, grounded in McGuire's (2022) practice guidelines. Key topics include interdisciplinary assessment strategies, evidence-based interventions for oculomotor dysfunction, visual field deficits, and vestibular hypofunction, and the integration of occupational and physical therapy approaches. Emphasis is placed on functional outcomes, patient-centered care, and clinical reasoning to support recovery and participation. Case examples and collaborative treatment planning illustrate how targeted interventions can enhance balance, gaze stability, and visual processing. Attendees will gain practical tools to address complex sensory-motor challenges in brain injury rehabilitation.

Concurrent Workshop 4 – Ayse Torres, PhD, CRC, LMHC

AccessTECH: Advancing Career Choices for Employment Success in Technology

Florida Atlantic University's AccessTECH project aims to broaden access to advanced technology careers and create a 21st-century workforce for youth and adults with disabilities. This nationwide initiative focuses on three high-demand tracks: Cybersecurity, Cloud Computing Solutions, and Computer-Aided Design & 3D Printing. By collaborating with vocational rehabilitation agencies, community organizations, and leading technology companies, the project provides specialized training, paid internships, and employment opportunities.

4:00 PM – 4:15 PM Break to Visit with the Exhibitors, Move to Next Session

4:15 PM FIRST DAY CLOSING PLENARY

Invited Speakers: Carrie Rayburn, CTRS, CBIS + Panel of Persons with Lived Experience

Beyond Surviving: Life After Acquired Brain Injury

This workshop explores the practical, emotional, and social challenges faced by survivors and caregivers. Attendees will gain insight into caregiver support, peer and community connection, and navigating identity changes following brain injury through discussion of recreational therapy, peer support, and structured social engagement. Participants will gain practical strategies for enhancing daily life and well-being, illustrated through personal stories. This presentation helps survivors and caregivers reclaim meaning in their lives by building confidence through connection and action and will also feature survivor perspectives.

5:15 PM Joint Conference Reception View Posters, Visit with Exhibitors



BRAIN INJURY FLORIDA

Support • Prevention • Education • Advocacy

CONFERENCE SCHEDULE

FRIDAY May 15, 2026

8:00 AM REGISTRATION & EXHIBITS – Continental Breakfast

8:30 AM Brain Injury Florida Annual Meeting – *All are welcome!*

Review of BIF 2025 Annual Report, highlighting accomplishments of the year. Nominations and elections for new Board Directors/Officers will be conducted.

9:00 AM DAY 2 OPENING PLENARY

Invited Speaker: Rebecca Campbell-Montalvo, PhD

Assistant Professor and AQUASS Lab Director, University of South Florida,
Department of Emergency Medicine, Morsani College of Medicine

The Hidden Architecture of TBI Recovery: What Social Networks Teach Us About Neuroplasticity

Social support strongly influences Traumatic Brain Injury (TBI) outcomes, yet the field rarely applies sophisticated social network methods long used in sociology. Instead, TBI research relies on vague, inconsistent definitions of social support, limiting usefulness for providers, survivors, and care partners. Preliminary VA findings suggest that TBI survivors have smaller, more vulnerable social networks, often reduced by marital strain, job loss, and other disruptions. Drawing on emerging neuroanthropological data, this talk explores how network attributes shape treatment response and daily well-being, and offers practical implications for care.

10:00 – 10:15 AM – Message from Premier Exhibitors

10:15 – 10:30 AM - Break to Visit with the Exhibitors, Move to Next Session

10:30 AM Concurrent Workshop 5 - Paige Salinas, MS, MHA, LCSW, CBIST-AP

Cultural Awareness in Brain Injury Rehabilitation

It is critical for rehabilitation professionals to develop the skills necessary for greater awareness, knowledge and understanding of the specific culture of patients they are treating. This includes identifying biases that may exist for the professional as well as knowing how to gather information about culture, differences and experiences from their patients so that an effective treatment plan may be implemented. Therapeutic alliance is important as this allows clinicians to familiarize themselves with the patients, fostering a patient centered approach. Throughout the assessment process, the interdisciplinary team can identify strengths and barriers in the context of psychosocial uniqueness and acculturation. As the patient, family and team are measuring progress, this will be inclusive of cultural factors that may be contributing to treatment planning and clinical outcomes.

CONFERENCE SCHEDULE

Concurrent Workshop 6 – Kimberly Mountbleau, OTRL, CBIS & Erika Unger, OTRL, CBIS
Advancing Therapeutic Use of Self Through Lived Experience Integration: Implications for Outcomes in Brain Injury Care

This presentation will cover the current state of basic preclinical research into TBI using laboratory models, including development and characterization of those models, ensuring that they have relevance to the human patient population, and how this work leads to the identification of novel therapeutic targets. Subsequent efforts to validate those new targets and translate the findings into clinical application will also be discussed, as well as the hurdles encountered when translating from mouse to man, and specific examples of new therapeutic targets.

11:30 AM Lunch with the Exhibitors – can use high tops in lobby and can use classrooms to sit and mingle!

12:30 - 1:30 PM AFTERNOON PLENARY

Invited Speaker: Rita Lenhardt, DHSc, CCC-SLP, CBIS-AP
Assistant Professor, Gannon University

Executive functions: Assessment and Treatment in mTBI

This presentation examines executive functioning impairments and their functional impact on everyday activities in individuals with mild traumatic brain injury (mTBI). Participants will review practical approaches to assessing executive function disorders and explore evidence-based intervention strategies aligned with the INCOG 2.0 guidelines. The session emphasizes clinical application to support meaningful recovery and improved outcomes.

1:30 – 1:45 PM Break to Visit with the Exhibitors
Move to Next Session

1:45 PM Concurrent Workshop 7 – Samuel Kopp & Patricia Kay Reyna, EdD

Restoring the Narrative: Echoes of Guidance, Threads of Hope with Survivor-Led Insights for Trauma-Informed ABI Care

Clinical spaces are shaped by protocols and pathology; the lived experience of acquired brain injury (ABI) often remains unheard. This session invites survivors, caregivers, and professionals into a survivor-led exploration of healing, identity, and trauma-informed care. Through personal storytelling, creative reflection, and evidence-based integration, participants will explore gaps in traditional treatment models. Drawing on Samuel's journey as an ABI survivor/advocate and Dr. Reyna's research/caregiving experience, the session bridges emotional insight with clinical relevance, highlighting communication and resilience-building strategies. Attendee case reflection exercises, which apply survivor-informed principles to real-world scenarios, will enhance the capacity to support recovery with empathy and nuance.



BRAIN INJURY FLORIDA
Support • Prevention • Education • Advocacy

CONFERENCE SCHEDULE

Concurrent Workshop 8 – Isaac Tourgemann, PhD, MsCP

Clinical Implications of the CBI-M TBI Classification System

The Comprehensive Brain Injury–Multidimensional (CBI-M) system provides an evidence-based framework for the acute evaluation and management of traumatic brain injury (TBI). This presentation will examine how the four-pillar model can be applied within an inpatient rehabilitation setting, with particular emphasis on the Modifiers pillar—encompassing medical, behavioral, and environmental factors that shape recovery trajectories. Drawing from clinical experiences at West Gables Inpatient Rehabilitation Hospital, we will explore how the role of the CBI-M in formulation, communication, and care coordination. Discussion will focus on how modifiers can inform therapy dosing, safety planning, and outcome prediction, highlighting CBI-M’s capacity to bridge medical, cognitive, and psychosocial domains. The session will conclude with considerations for extending CBI-M principles to chronic TBI care and long-term management.

2:45 – 3:00 PM Break - Exhibitor Prizes – Move to next session

3:00 PM CONFERENCE CLOSING PLENARY

Invited Speaker: Jolie Haun, PhD, EDS, LMT,

Research Health Scientist, James A. Haley Veterans’ Hospital

Adjunct Associate Professor, Internal Medicine, University of Utah

Partnering with Communities to Improve Access to Care for People with TBI

I-HEAL’s mission is to use implementation science and human-centered design to engage community partners with a goal of improving access to care for people with TBI. This presentation will illustrate challenges through lived-experience stories and subsequent partnerships to promote healthcare quality for people with TBI-related disability. Information about this award and activities engaging people with lived experience are described at ihealbrain.org.

4:00 PM – CONFERENCE WRAPS UP

Special Thanks to our 2026 BIF Conference Committee

Teah Gulley Co-Chair

Denny Armington

Elaine Lecatsas

Wendy Carranco

Drew Nagele Co-Chair

Erika Unger

Rebecca McCarthy

Rebecca Montalvo-Campbell

CONFERENCE REGISTRATION

HOW TO REGISTER FOR THE CONFERENCE



Complete Registration Form

- **Online** at [BIF Conference Registration](#)
 1. From QR Code or URL, Click on “Register” and create a UF account using your email
 2. Indicate your degree and profession if applicable, or select none/other if not applicable
 3. After completing account registration, log back into your account
 4. Complete all yellow sections of profile page
 5. Click “Continue” to start registration
 6. Choose 2nd Section BIF Conference along with applicable registration type
 7. If you want to also attend the UF Research Symposium – Choose the Optional Add On
 8. Click “Continue” and complete survey, then you will get to page for payment options
- **OR**
- **Complete and E-Mail** the Conference Registration/Payment form found below to:
Brain Injury Florida c/o Denny Armington – DArmington@BrainInjuryFL.org
- **Scholarships** – for survivors or family members who are not able to pay the full cost of Conference registration/travel fees to attend the Conference, partial scholarships may be available by completing the Scholarship Application, which is available by scanning this QR code and completing a fillable Scholarship Application form.
[BIF 2026 Conference Scholarship Link](#)



UNIVERSITY OF FLORIDA RESEARCH & ACADEMIC CENTER, LAKE NONA

The UF Brain Injury Research Symposium kicks off the day on Thursday May 14 from 9 AM to 6 PM, and this year's **BIF** Educational Conference will overlap with the 2nd half of the UF Symposium, and will start mid-day at the same location, Thursday May 14 from 11 AM to 6 PM and will continue on Friday May 15 from 8 AM to 4 PM. Both conferences will be held at the University of Florida's Research and Academic Center at Lake Nona, located at 6550 Sanger Road, Orlando, Florida, 32827. Free parking is available right outside!



BRAIN INJURY FLORIDA

Support • Prevention • Education • Advocacy

For those who require overnight accommodation, a special conference rate is available at the nearby hotels listed below. Reservations for Wednesday, Thursday, and Friday nights can be made by clicking on the link below to get the special BIF Conference rate or if you want to book fewer or more room nights, call the hotel and ask for the Brain Injury Florida Group Rate:

Or click here to [Book your group rate for Brain Injury FL](#) for any of the 3 Marriott Hotels (must book by May 6, 2026):

- SpringHill Suites by Marriott Orlando Lake Nona
13700 Boggy Creek Road, Orlando FL 32824
\$149 per night (407-313-3012)
- Courtyard by Marriott Lake Nona
6955 Lake Nona Boulevard, Orlando FL 32827
\$179 per night (407-856-9165)
- Residence Inn by Marriott Orlando Lake Nona
6955 Lake Nona Boulevard, Orlando FL 32827
\$189 per night (407-888-9974)
- Hampton Inn (must book by April 14, 2026)
10002 Eagle Creek Sanctuary Blvd., Orlando, FL, 32832
\$139 per night 407/275-5071
To book the BIF Group Rate for the Hampton click [HERE](#).

BENEFITS OF ATTENDING

- Network with the Florida brain injury community
- Learn the latest advances in brain injury rehabilitation
- Learn about cutting edge acquired brain injury research
- Learn about brain injury rehabilitation services and supports in your community
- Connect to brain injury support groups in your area
- Conference attendance includes:
 - Annual Membership in **Brain Injury Florida**
 - Participation in Annual **BIF** Annual Meeting
 - Afternoon Snack and Reception Day 1
 - Light Breakfast and Luncheon Buffet Day 2

Please Register on-line at: [BIF Conference Registration](#)

If you cannot register on-line, you may copy this page and complete one page for each person attending:

Name _____

Organization _____

Address _____

City _____ State _____

Zip Code _____ Email _____

Phone _____ Please list any medical/dietary restrictions: _____

Registration Type	Cost	Total
Survivor/Family Member Student/Trainee	\$75	\$
Rehab Professional	\$200	\$
Rehab Professional with CEU or Psychology CE or Physician CME	\$250	\$
Psychology with APA CE	\$275	\$
Add UF Symposium (CME)	\$50	\$
Additional contribution to support Survivor Scholarships		\$
Total		\$

CONFERENCE REGISTRATION

Payment Options (only if not doing on-line registration)

1. Credit card:

Card No: _____

Name on Card: _____

Expiration Date: _____ Billing Zip Code: _____

CVV _____ Signature: _____

Scan form: DArmington@BrainInjuryFL.org

2. Pay by check, send copy of Registration Form and Check in Regular US Mail:

Checks should be made out to **Brain Injury Florida, Inc.** and sent to:

Brain Injury Florida, Inc.
19321 US Hwy 19 North, Suite 307
Clearwater, FL 33764

Opt-Out Notice

You have received this email and 2026 BIF Conference information because your email was on a database of people who had previously expressed interest in brain injury. If you do not wish to continue to receive emails from **Brain Injury Florida**, please send us an email at info@BrainInjuryFL.org and type "opt out" and you will be taken off the



BRAIN INJURY FLORIDA
Support • Prevention • Education • Advocacy

BIF CONFERENCE CE/CEU INFORMATION

Continuing education credits or contact hours have been applied for and are pending approval for the disciplines listed below. To receive CE/CEU credits in a specific discipline or a general attendance certificate, you must register, attend, and complete an evaluation after each session. BIF is not responsible for individual CE credits if this process is not followed, and refunds will not be given.

CEU FEES | \$50

PSYCHOLOGISTS CE FEE | \$75

Certified Brain Injury Specialists

Certified Case Manager

Rehab Nursing

Occupational Therapists*

Certified Rehabilitation Counselors

Physician CME Category 2

Physical Therapists*

Psychologists (APA)**

Social Workers*

Speech Therapist

BIF is approved by the American Psychological Association to sponsor continuing education for psychologists. BIF maintains responsibility for this program and its content.



* Florida CEUs only; all other CEUs are national.

** This conference includes 9 APA CEs. APA Division 22 (Rehabilitation Psychology) approved by the American Psychological Association to sponsor continuing education for psychologists. APA Division 22 maintains responsibility for this program and its content. For more information about Division 22 or to inquire about membership, please visit www.div22.org.

Brain Injury Florida, Inc., is a 501(c) (3) tax exempt organization incorporated in Florida.

The official registration and financial information may be obtained from the Florida Department of State at

<https://search.sunbiz.org/>

Registration does not imply endorsement.